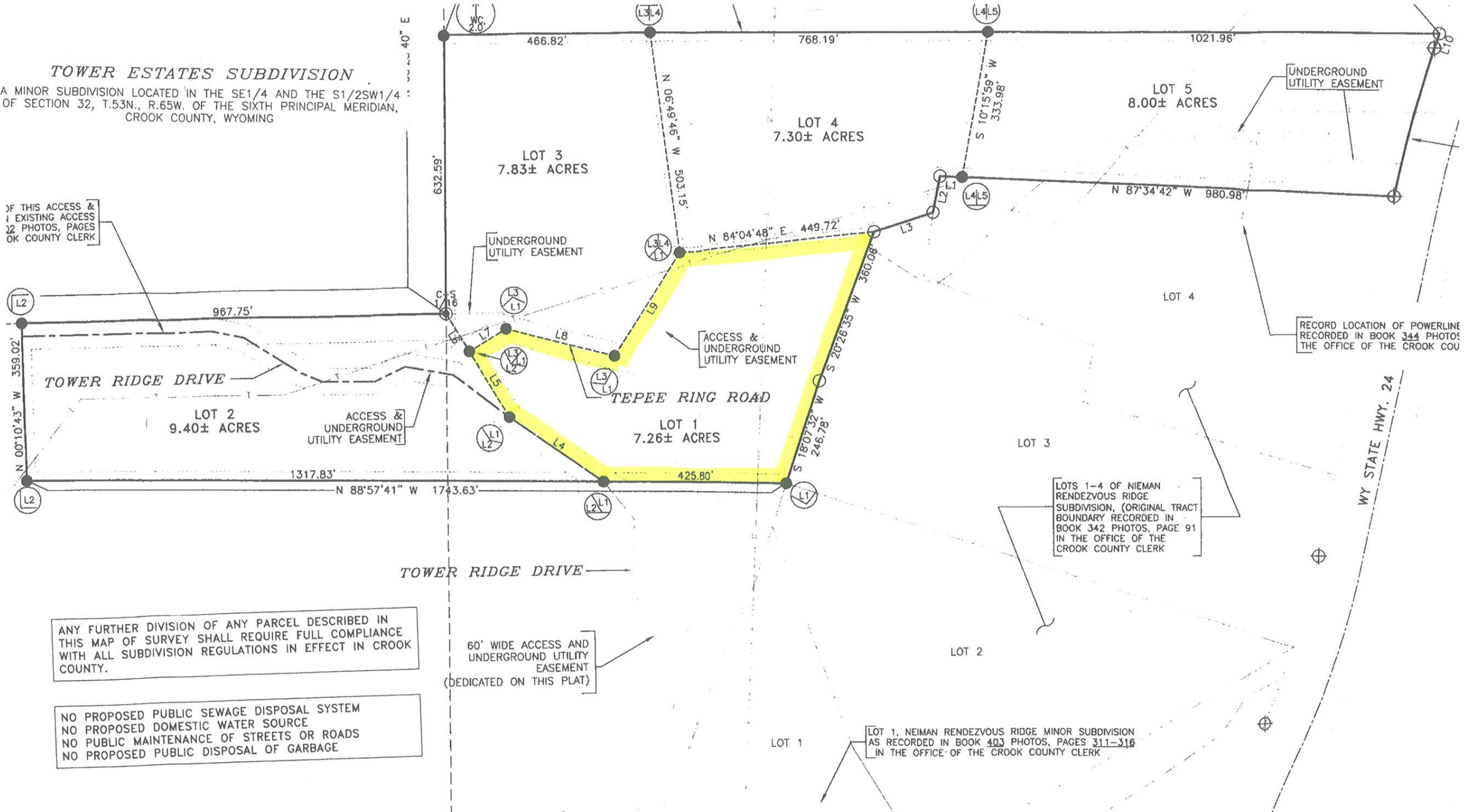


THIS IS A PORTION OF THE PLAT MAP—TO OBTAIN THE COMPLETE PLAT MAP PLEASE CONTACT THE CROOK COUNTY COURT HOUSE.

TOWER ESTATES SUBDIVISION

A MINOR SUBDIVISION LOCATED IN THE SE1/4 AND THE S1/2SW1/4 OF SECTION 32, T.53N., R.65W. OF THE SIXTH PRINCIPAL MERIDIAN, CROOK COUNTY, WYOMING



OF THIS ACCESS & EXISTING ACCESS, SEE PHOTOS, PAGES 301-302 IN THE OFFICE OF THE CROOK COUNTY CLERK

UNDERGROUND UTILITY EASEMENT

RECORD LOCATION OF POWERLINE RECORDED IN BOOK 344 PHOTOS IN THE OFFICE OF THE CROOK COUNTY CLERK

LOTS 1-4 OF NIEMAN RENDEZVOUS RIDGE SUBDIVISION, (ORIGINAL TRACT BOUNDARY RECORDED IN BOOK 342 PHOTOS, PAGE 91 IN THE OFFICE OF THE CROOK COUNTY CLERK)

ANY FURTHER DIVISION OF ANY PARCEL DESCRIBED IN THIS MAP OF SURVEY SHALL REQUIRE FULL COMPLIANCE WITH ALL SUBDIVISION REGULATIONS IN EFFECT IN CROOK COUNTY.

NO PROPOSED PUBLIC SEWAGE DISPOSAL SYSTEM
 NO PROPOSED DOMESTIC WATER SOURCE
 NO PUBLIC MAINTENANCE OF STREETS OR ROADS
 NO PROPOSED PUBLIC DISPOSAL OF GARBAGE

60' WIDE ACCESS AND UNDERGROUND UTILITY EASEMENT (DEDICATED ON THIS PLAT)

LOT 1, NIEMAN RENDEZVOUS RIDGE MINOR SUBDIVISION AS RECORDED IN BOOK 403 PHOTOS, PAGES 311-316 IN THE OFFICE OF THE CROOK COUNTY CLERK