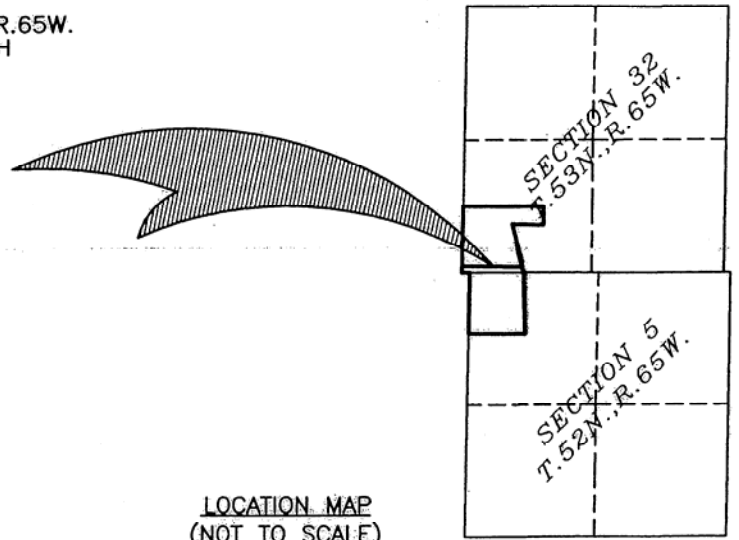
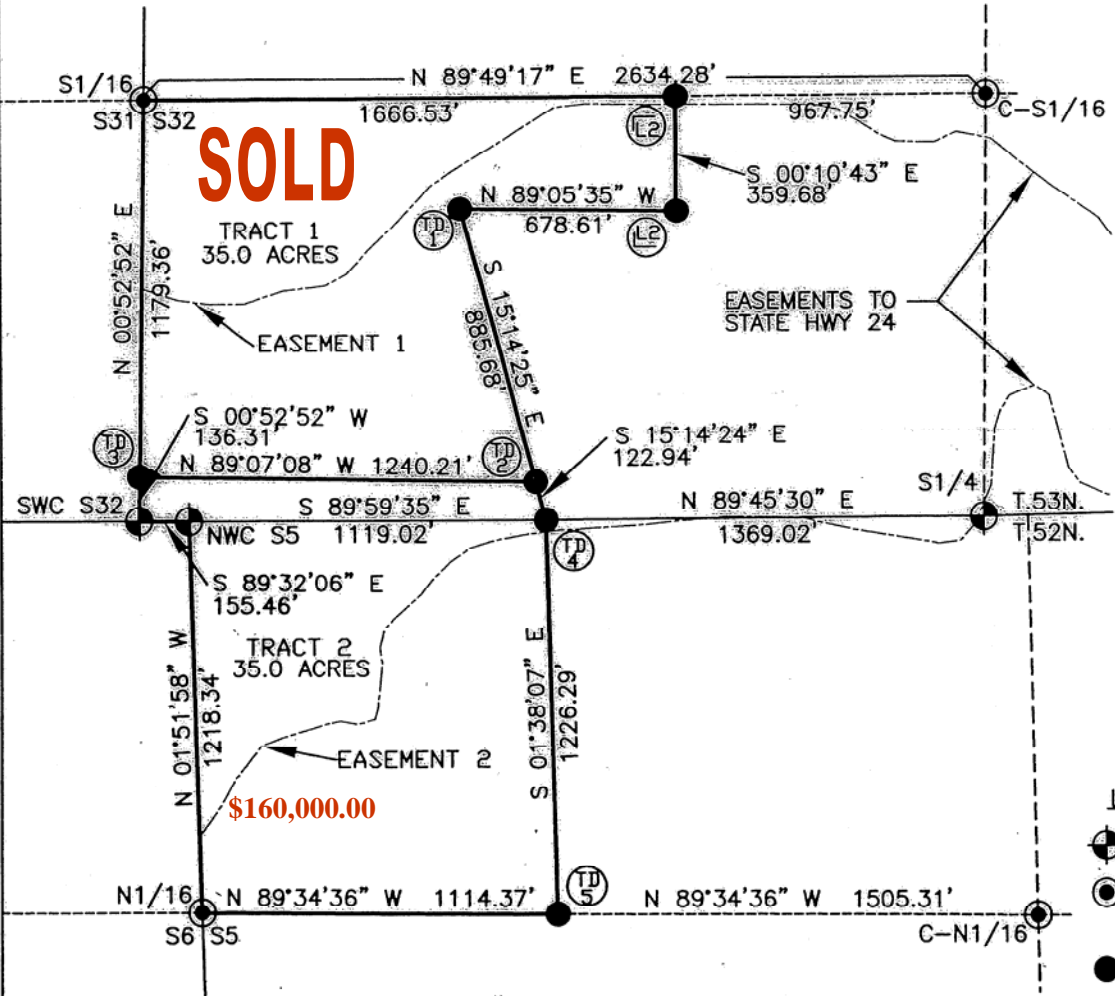
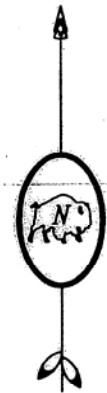


PRICES SUBJECT TO CHANGE WITHOUT NOTICE.

MAP OF SURVEY
 TRACTS OF LAND LOCATED IN THE S1/2SW1/4 OF SECTION 32, T.53N., R.65W.
 AND THE NW1/4NW1/4 OF SECTION 5, T.52N., R.65W. OF THE SIXTH
 PRINCIPAL MERIDIAN, CROOK COUNTY, WYOMING.



LOCATION MAP
(NOT TO SCALE)



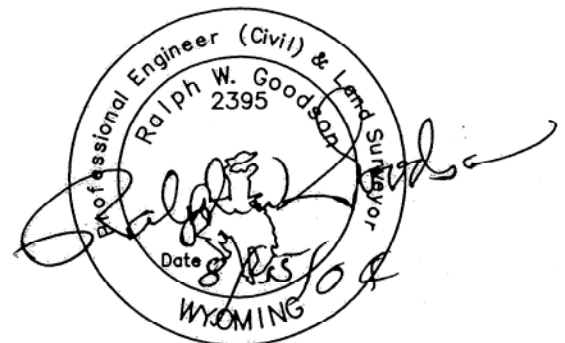
- LEGEND**
- U.S.G.L.O. BRASS CAP
 - 2 1/2" DIAMETER ALUMINUM SURV-CAP STAMPED PE&LS 2395 MOUNTED ATOP A NO. 5 x 24" REBAR
 - 1 1/2" DIAMETER ALUMINUM SURV-CAP STAMPED PE&LS 2395 AND AS NOTED MOUNTED ATOP A NO. 5 x 24" REBAR
 - IDENTIFIER STAMPED ON CAP

- SECTION LINE
- QUARTER SECTION LINE
- SIXTEENTH SECTION LINE
- TRACT BOUNDARY
- EASEMENT CENTERLINE

EASEMENT 1
 EXISTING EASEMENT AS RECORDED IN BOOK 402 PHOTOS, PAGES 667-679 IN THE OFFICE OF THE CROOK COUNTY CLERK.

EASEMENT 2
 EXISTING EASEMENT AS RECORDED IN BOOK 389 PHOTOS, PAGES 591-594 IN THE OFFICE OF THE CROOK COUNTY CLERK.

CERTIFICATE OF SURVEYOR
 STATE of WYOMING)
)SS
 COUNTY of CROOK)
 I, Ralph W. Goodson, of Sundance, Crook County, Wyoming, do hereby certify that this map was drawn from notes taken during an actual survey done by me and under my direct supervision during July, 2004 and that that survey is accurately represented hereon.



RALPH W. GOODSON, PE&LS 2395

Prepared By: **BEARLODGE LTD., INC.** Date: 8/13/04 04662
 Consulting Engineers & Land Surveyors
 P.O.Box 130, 420 Cleveland St., Sundance, WY 82729 307-283-3633

7-865