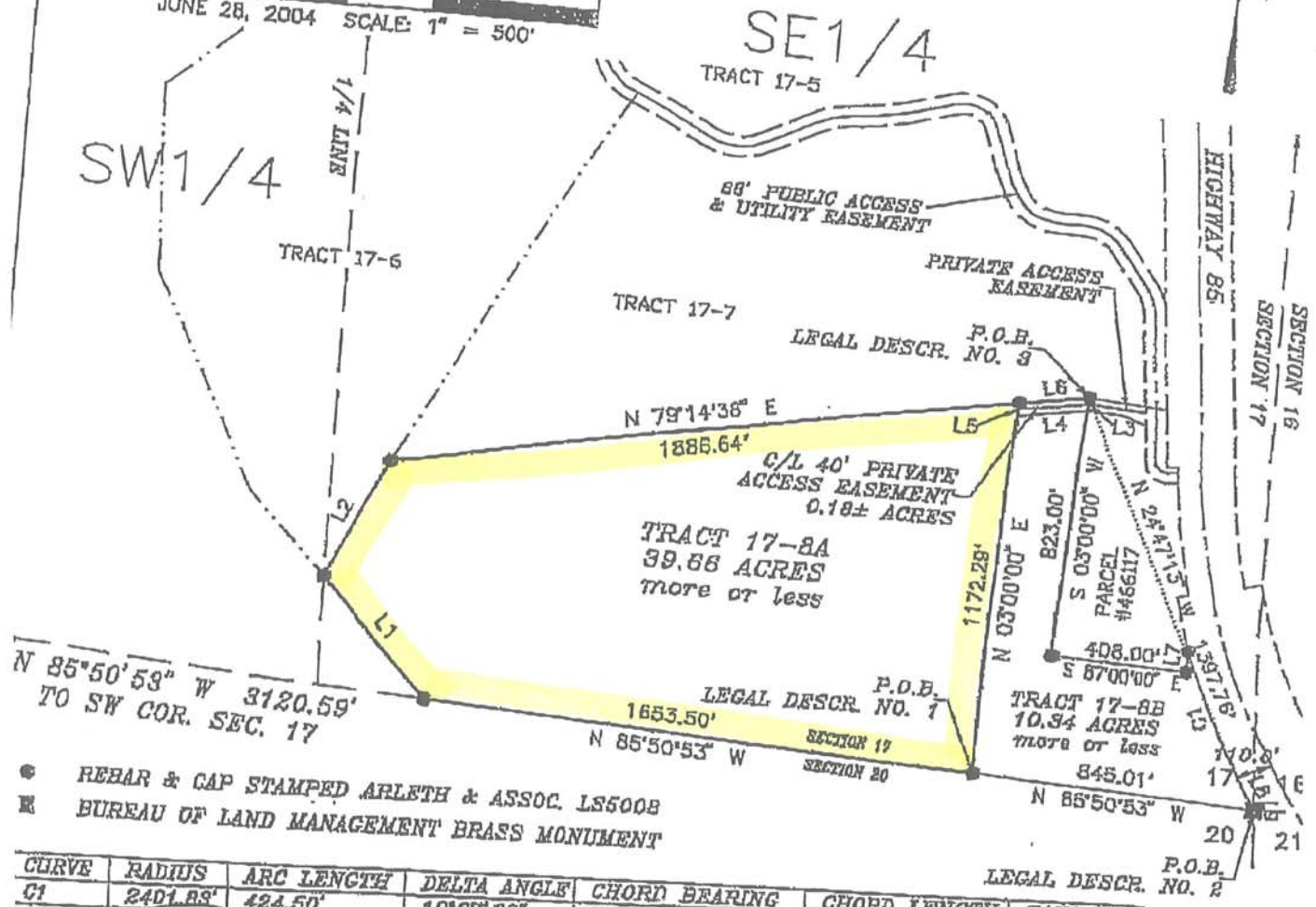
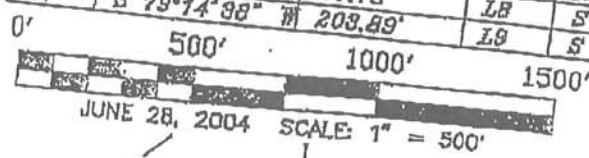


TRACT 17-8A, TRACT 17-8B AND 40' PRIVATE ACCESS EASEMENT
 LOCATED IN THE SE1/4 OF SECTION 17, T46N, R61W, 6TH P.M.,
 WESTON COUNTY, WYOMING

| LINE | BEARING | DISTANCE | L5 | BEARING | DISTANCE |
|------|---------------|----------|----|---------------|----------|
| L1 | N 49°51'20" W | 463.20' | L5 | N 03°00'00" E | 41.18' |
| L2 | N 24°32'55" E | 407.04' | L6 | N 79°14'38" E | 188.83' |
| L3 | S 03°00'00" E | 41.18' | L7 | N 03°00'00" E | 87.84' |
| L4 | S 79°14'38" W | 203.89' | L8 | S 23°08'54" E | 109.72' |
| | | | L9 | S 00°46'21" E | 6.87' |



REBAR & CAP STAMPED ARLETH & ASSOC. LS5008
 BUREAU OF LAND MANAGEMENT BRASS MONUMENT

| CURVE | RADIUS | ARC LENGTH | DELTA ANGLE | CHORD BEARING | CHORD LENGTH | TANGENT |
|-------|----------|------------|-------------|---------------|--------------|---------|
| G1 | 2401.83' | 424.50' | 10°07'36" | N 23°05'07" W | 423.96' | 212.81' |

Professional Land Surveyor
 JOHN M. ARLETH & ASSOC. P.L.S. 5008, DEADWOOD, SD, DO
 HEREBY CERTIFY THAT THE PROPERTY SHOWN HEREON
 WAS SURVEYED AND STAKED UNDER MY SUPERVISION
 AND THAT ALL DIMENSIONS ARE TRUE AND CORRECT TO
 THE BEST OF MY KNOWLEDGE AND BELIEF, DATED
 THIS 14TH DAY OF JUNE, 2004.
 JOHN M. ARLETH, P.L.S. 5008

REGISTER OF DEEDS
 STATE OF WYOMING, COUNTY OF WESTON
 I HEREBY CERTIFY THAT THIS MAP WAS
 OFFICE AT _____ O'CLOCK, THIS
 20____, AND RECORDED IN MAP NO. _____

COUNTY CLERK