

THIS IS A PORTION OF THE PLAT MAP—TO OBTAIN THE COMPLETE PLAT MAP PLEASE CONTACT THE CROOK COUNTY COURT HOUSE.

Prices subject to change without notice.

CURVE	RADIUS	ARC LENGTH	CHORD LENGTH	CHORD BEARING	DELTA ANGLE
C1	1809.86'	183.86'	183.78'	S 21°19'44" W	05°49'14"
C2	2764.79'	181.95'	181.93'	S 26°07'44" W	03°46'15"

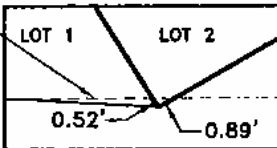
LINE	BEARING	DISTANCE
L1	S 24°19'09" W	229.16'
L2	N 00°17'32" W	59.80'

ANY FURTHER DIVISION OF ANY PARCEL DESCRIBED IN THIS MAP OF SURVEY SHALL REQUIRE FULL COMPLIANCE WITH ALL SUBDIVISION REGULATIONS IN EFFECT IN CROOK COUNTY.

NO PROPOSED PUBLIC SEWAGE DISPOSAL SYSTEM
 NO PROPOSED DOMESTIC WATER SOURCE
 NO PUBLIC MAINTENANCE OF STREETS OR ROADS
 NO PROPOSED PUBLIC DISPOSAL OF GARBAGE

PREVIOUSLY PERMITTED AS NEIMAN RENDEZVOUS RIDGE SUBDIVISION, LOT 1

NORTH LINE OF 60' WIDE ACCESS EASEMENT RECORDED IN BOOK 402 PHOTOS, PAGE 665 IN THE OFFICE OF THE CROOK COUNTY CLERK



20' WIDE UNDERGROUND UTILITY EASEMENT

LOT 2A
15.61 ACRES

EASEMENT LINE
 L=68.45'
 R=1749.86'
 C LEN=68.44'
 BRG=S 19°43'51" W

EXISTING 20' WIDE UNDERGROUND UTILITY EASEMENT VACATED ON THIS PLAT

\$150,000.00

60' WIDE ACCESS EASEMENT PARALLEL TO HIGHWAY R/W LINE FILED IN CROOK COUNTY CLERKS OFFICE /FILE 419, MAP 1367.

APPROXIMATE LOCATION OF TELEPHONE EASEMENT AS RECORDED IN BOOK 349 PHOTOS, PAGE 5 & 6 IN THE OFFICE OF THE CROOK COUNTY CLERK

HIGHWAY R/W LINE

EXISTING 60' WIDE ACCESS EASEMENT RECORDED IN BOOK 402 PHOTOS, PAGE 665 IN THE OFFICE OF THE CROOK COUNTY CLERK. SAID EASEMENT ALSO SERVES AS A UTILITY EASEMENT.

LEGEND

- LAND PARCEL TO BE ADDED TO LOT 2, THIS REPLAT
- USGLO BRASS CAP
- 1 1/2" DIAMETER ALUMINUM SURV-CAP STAMPED PE&LS 2395 MOUNTED ATOP A NO. 5x24" REBAR AND AS NOTED
- WYDOT R/W MONUMENT
- 1" DIAMETER PLASTIC CAP STAMPED LS 2079

S1/4
S32

1098.93'

N 89°49'23" E 2647.80'

N 89°49'23" E 944.07'

WYOMING HIGHWAY 24

N 18°07'32" E
 103.64'
 (L4)
 (RR2)
 N 19°46'16" W
 539.13'
 (RR3)
 N 31°55'37" W
 305.84'
 (L5)

N 71°57'10" W
 1217.08'

98+66.76

96+31.74

604.80'